



4. BDI –REACH- Workshop

REACH IT, IUCLID 5 IT Konzepte der Industrie

Aktueller Stand in RIP 2, bei REACH IT und IUCLID 5

Berlin, 5. und 6.11.2007

**Dr. Andrea Paetz
Bayer AG
Corporate Center
Environment & Sustainability (BAG E&S)**

Die Folien basieren auf den Präsentationen
des REACH IT Workshops der ECHA am 5.10.2007 in Brüssel.

RIP 2

1. Stand IUCLID 5
2. REACH IT
 1. Projektplanung
 2. Entwicklung
 3. Status
 4. Überblick
 5. Firmendaten
 6. Sicherheitssysteme
 7. Vorregistrierung
 8. Pre-SIEF
 9. Registrierung
 10. CSR/CSATool
 11. Rechnungen

1. Stand IUCLID 5

IUCLID 5

- ❖ IUCLID 5 Roll-out 12.6.2007
- ❖ Status (1.10.2007)
- ❖ Ca. 6000 User haben sich angemeldet
- ❖ Downloads
 - Stand alone **3350**
 - Netzwerk **852**
- ❖ LEO (Legal entity): **3113**
- ❖ Anfragen beim Help desk : **850**

Stand 1.10.2007

Entwicklung IUCLID

Die IUCLID-Entwicklung wurde bisher gemeinsam durchgeführt:

- ❖ EU-Kommission:
 - DG ENTR (Unternehmen)
 - DG ENV (Umwelt)
 - DG JRC (Joint Research Centre), Ispra
- ❖ Externe Service Provider
 - Trasys, Belgien
 - Technidata, Deutschland
- ❖ Vertreter von Stakeholdern
 - CEFIC, CONCAWE, OECD...
- ❖ Zur Zeit erfolgt die Finanzierung durch DG ENTR
- ❖ Zur Zeit gibt es ein Helpdesk. In Zukunft wird es mehrere Helpdesks geben (ECHA für REACH User, OECD für OECD User, JRC für Biozide etc.)

Entwicklung IUCLID

- ❖ In Zukunft erfolgt die Weiterentwicklung gemeinsam mit der ECHA
- ❖ Diese leitet eine IUCLID Management Group (IMG). IMG
 - Ist „Besitzer“ von IUCLID
 - garantiert, dass es immer nur eine IUCLID-Version gibt
 - hat das alleinige Recht, den Quellcode zu ändern (Anforderungen, die den Quellcode nicht berühren, können auch von anderer Seite umgesetzt und finanziert werden)
 - finanziert neue Tools, wenn essentiell und allgemein notwendig
 - leitet das OECD IUCLID User Expert Panel
 - sammelt die Wünsche der EU und gibt sie an die OECD IUCLID Gruppe weiter
 - leitet die OECD IUCLID User Expert Panel Meetings.
 - berät das OECD Expert Panel in technischen und finanziellen Fragen
 - arbeitet mit dem ECHA IT Team zusammen, um die Entscheidungen des OECD IUCLID User Expert Panel umzusetzen
 - kümmert sich um die Serviceprovider
 - ist zuständig für die Verträge und die Weiterentwicklung
 - verteilt die neuen Versionen
 - betreibt die IUCLID Website

Entwicklung IUCLID

- ❖ Folgende Tools werden derzeit entwickelt:
 - Query Tool
 - Tool für die Vorregistrierung
 - SNIF Migration (Neustoffe)
- ❖ Alle weiteren IUCLID Entwicklungen erfolgen dann unter IMG (ECHA)
- ❖ Dazu gehören Vorschläge, die über das OECD IUCLID User Expert Panel gemacht werden
- ❖ Das OECD IUCLID User Expert Panel wird aus drei Kanälen gespeist:
 - ECHA Service Desk (Help desk) für REACH bezogenen Themen (Vorschläge werden vor der Weitergabe von IMG zusammengeführt)
 - BIAC/CEFIC
 - Nationale OECD Delegationen

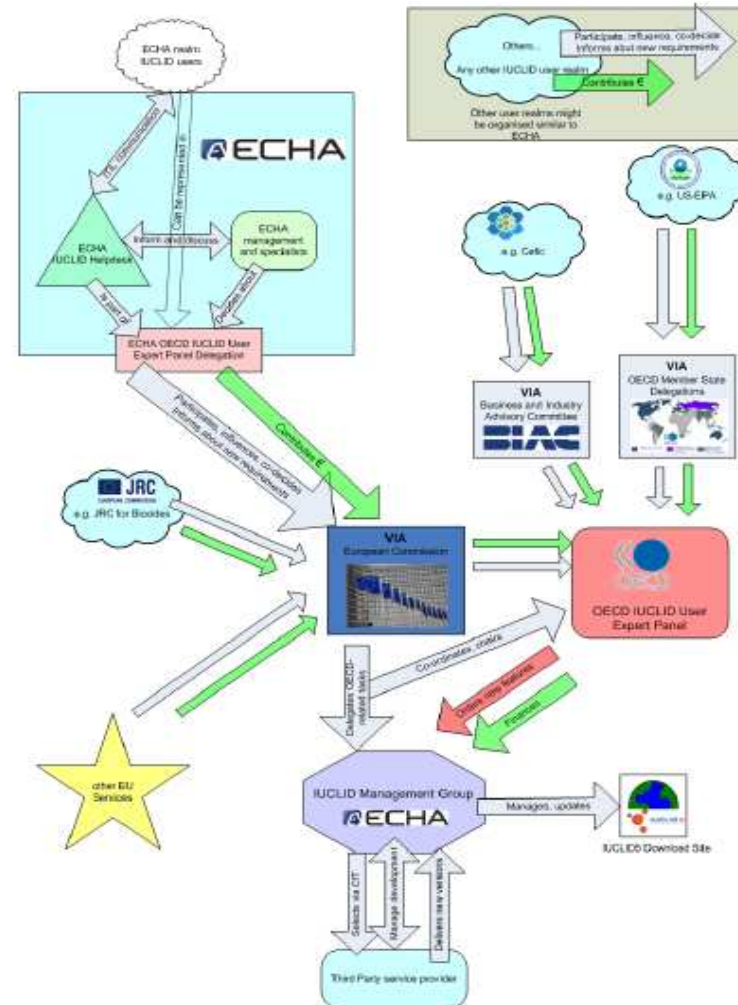
XML Format

- ❖ REACH Article 111 *Formate und Software für die Übermittlung von Informationen an die Agentur*

Die Agentur legt für die Übermittlung von Informationen an die Agentur Formate fest, die sie kostenlos zur Verfügung stellt, ... Die Mitgliedstaaten, Hersteller ... verwenden diese Formate und Pakete in ihren Vorlagen an die Agentur gemäß dieser Verordnung. Insbesondere stellt die Agentur Softwareinstrumente zur Verfügung, um die Übermittlung aller Informationen ... zu erleichtern.

Für die Registrierung wird als Format für das technische Dossier nach Artikel 10 Buchstabe a das IUCLID-Format verwendet. Die Agentur koordiniert die Weiterentwicklung dieses Formats mit der Organisation für wirtschaftliche Zusammenarbeit und Entwicklung (OECD), um eine größtmögliche Harmonisierung zu gewährleisten.

- ❖ IUCLID 5 berücksichtigt dieses Format. Wer IUCLID benutzt ist auf der sicheren Seite.
- ❖ Um aber den Austausch mit anderer Software zu erleichtern (Schnittstellen) ist das Format aber auch auf der IUCLID Website veröffentlicht
 1. <http://iuclid.eu>
 2. Klicken auf "Get support"
 3. Klicken auf "IUCLID Format"



2. REACH IT

Projektplanung REACH IT



- ❖ Zur Unterstützung von REACH stellt die ECHA ein REACH IT System sowie andere IT Tools zur Verfügung. Nutzer sind
 - Firmen
 - Mitgliedsstaaten
 - EU-Kommission
 - Öffentlichkeit
 - Agentur
- ❖ Ziele des Projektes sind:
 - Entwickeln eines IT-Systems zur Speicherung von Dossiers zur Vorregistrierung, Registrierung, Notifizierung, Autorisierung
 - Unterstützung der Workflows
 - Bereitstellen einer öffentlichen Datenbank
 - Garantie der Datensicherheit
 - Abwicklung der Rechnungen
- ❖ Finanzierung und Leitung des Projektes durch DG ENT, Unterstützung durch DG ENV und JRC. Ab 2008 geht das gesamte Projekt an die ECHA über.
- ❖ Realisierung über E-Techemia (joint-venture Trasys-TechniData)

Entwicklung REACH IT

REACH-IT wird in mehreren Stufen entwickelt

- 1. Phase: September 2007
 - 2. Phase : Dezember 2007
 - 3. Phase : März 2008
 - Bis Mitte März soll REACH IT bei der Agentur und den Mitgliedsstaaten operativ sein
- ❖ REACH IT soll so verwirklicht werden, dass es von allen Stakeholdern akzeptiert wird. Deshalb ist die Zusammenarbeit mit Mitgliedsstaaten und Industrie wichtig. Dazu gehört:
- Feedback aus Stakeholder Workshops (1. Workshop am 5.10.2007)
 - Teilnahme an Tests von REACH-IT
 - Identifikation wichtiger Themen (z. B. Training)
 - Einrichten eines REACH-IT Helpdesks

Entwicklung REACH IT

In REACH IT gibt es drei Hauptakteure

- ❖ Industrie: Hersteller, Importeure, Repräsentanten, Downstream User inkl. Händler
- ❖ Agentur/Mitgliedsstaaten
- ❖ Öffentlichkeit: Verbraucher und Umweltgruppen (NGO)
- ❖ Es wird für jeden Akteur spezielle Websites und IT Systeme geben.

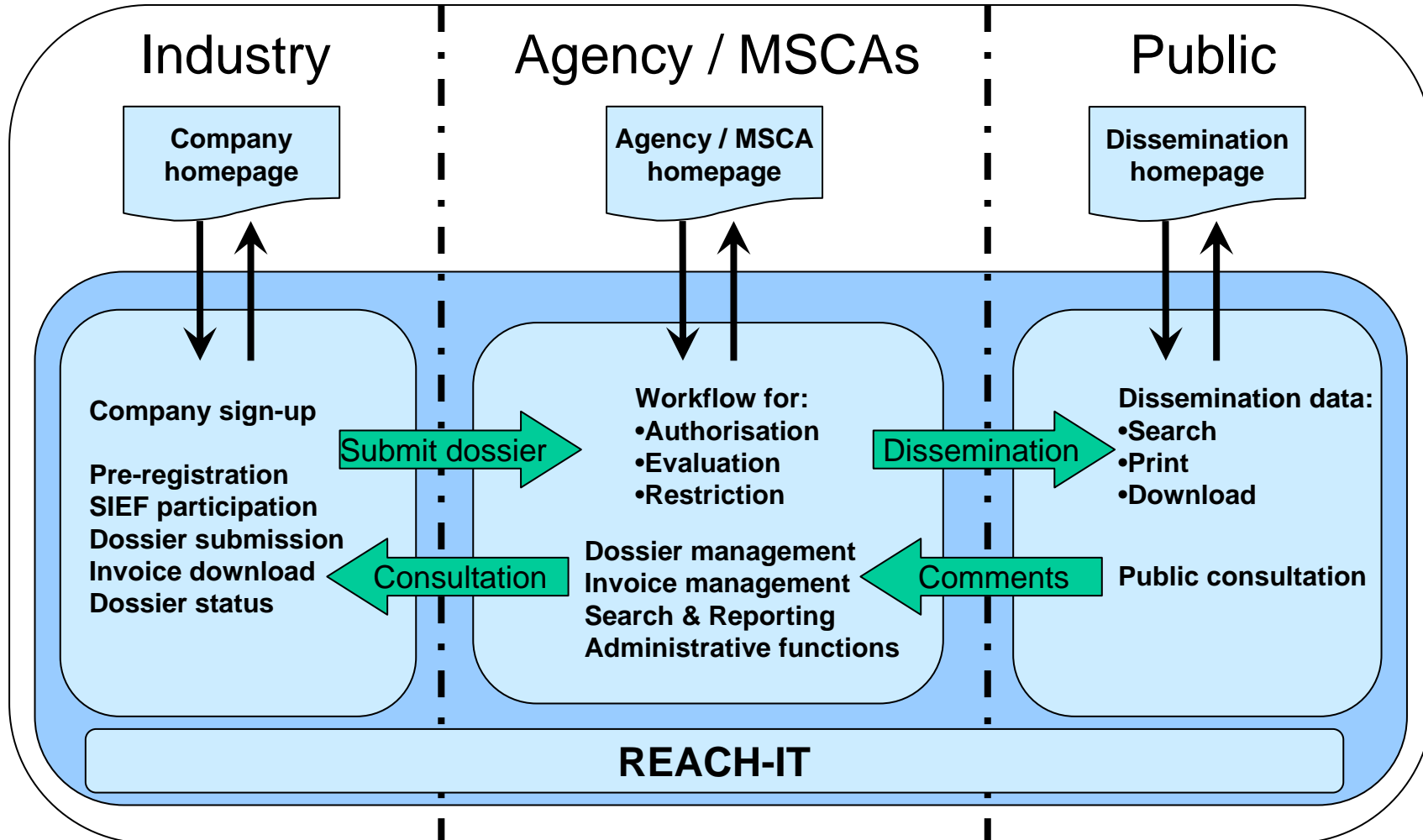
Status

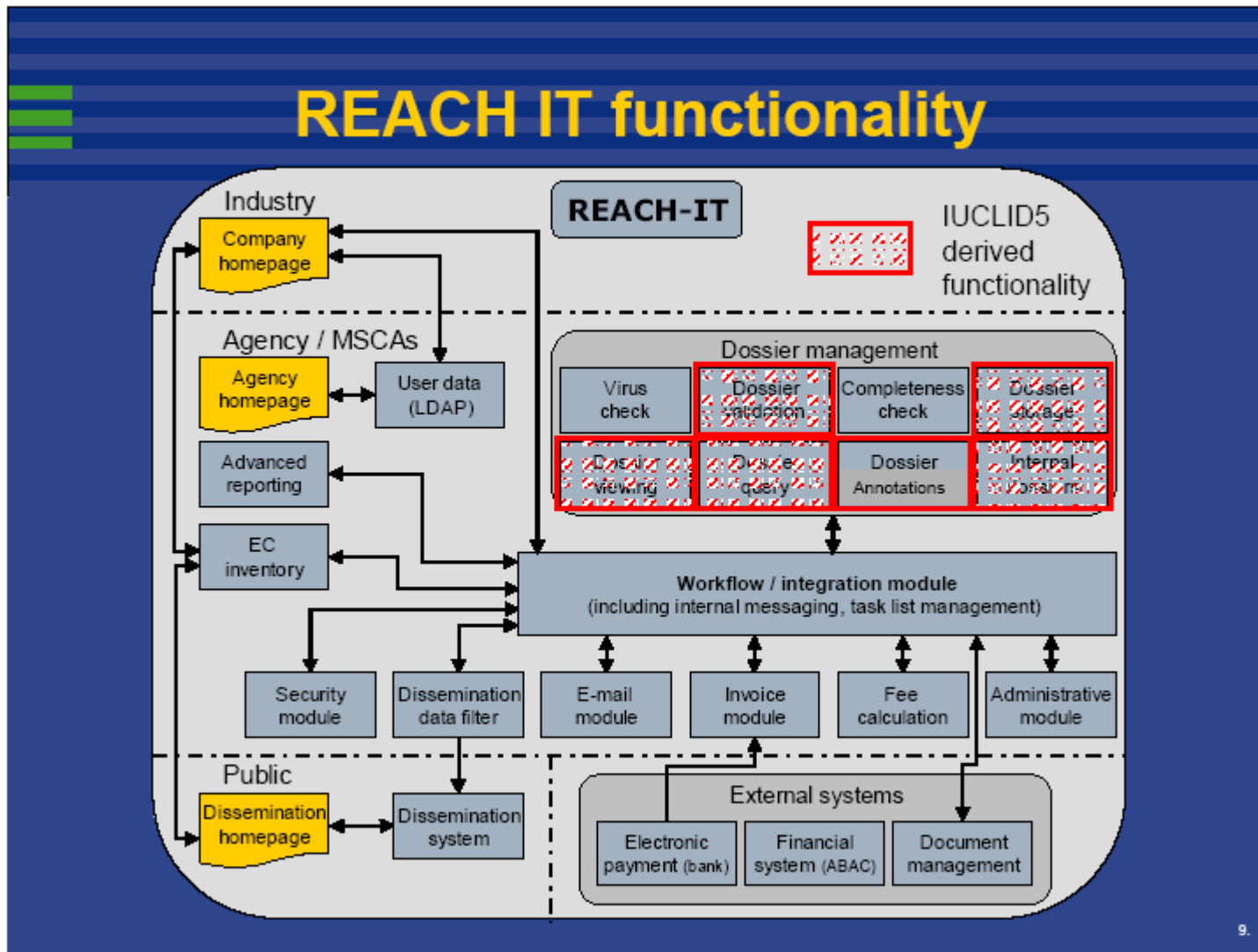
- ❖ Die 1. Phase wurde im September 2007 abgeschlossen
 - Firmenregistrierung
 - Vorregistrierung
 - Dossierabgabe inkl. Validierung und Archivierung
 - Rechnungserstellung
 - Basisfunktionen für die öffentliche Datenbank
 - Sicherheits- und Usermanagement
 - Internationalisierung / Mehrsprachigkeit (keine Übersetzung)
- ❖ Die 2. Phase wird im Dezember 2007 abgeschlossen werden und im Januar für MS verfügbar sein.
 - Pre-SIEF formation
 - Basic workflow functionality, including general functionality and management of confidentiality claims and the inquiry process
 - Registration fee calculation
 - Invoice generation and payment
 - Technical completeness check

Status

- Dossier annotations (non scientific)
 - Basic search
 - Management and viewing of dossiers
 - Additional security (including anti-virus) and user management
 - Joint submission
- ❖ Die 3. Phase soll im März 2008 abgeschlossen werden.
- Basic Dissemination
 - Advanced search/query
 - System administration
 - Additional workflow functionality, such as dossier compliance, PPORD, evaluation of testing proposals
 - Scientific annotations
 - Translations of selected parts of the system
- ❖ Eine weitere Phase ist für Juli 2008 geplant.

REACH-IT overview





Datenbank (physisch)

- ❖ Der Server wurde installiert.
- ❖ Es gibt zwei Datenbanken geben, die beide durch die ECHA geleitet werden:
 - Hauptdatenzentrum im ECHA-Gebäude
 - Backup Datenzentrum - 100%ige Replikation der Daten, aber geringere Performance (50%)
- ❖ Beide befindet sich im Moment im gleichen Gebäude, die Backup-Datenbank wird aber ausgelagert werden.

Firmendaten

- ❖ Anmelden einer Firma (Legal Entity)
- ❖ Sign-up in REACH-IT – alle Angaben werden manuell eingetragen oder
- ❖ Import eines LEOX (kann unabhängig von einer Registrierung vorab erledigt werden).
- ❖ Die Daten in der Homepage der Firma auf der Website der Agentur sind die Masterdaten. Darauf basieren alle Transaktionen (Kommunikation, Rechnung...).
- ❖ Update dieser Informationen erfolgen immer dort. (z. B. Änderungen bei den Kontaktdaten, Adresse, Merger)
- ❖ Ein Export, um die Daten ins eigene System zu laden, ist möglich (Exportfunktion [XML])
- ❖ Updates zu Stoffen erfolgen durch das Verschicken eines neuen Dossiers.

Sicherheitssysteme

Firmen

- ❖ Für jede Firma wird eine eigenen Homepage eingerichtet
- ❖ Man wählt sich mit Login Name und Password ein
- ❖ Firmen haben nur Zugang zu ihrer eigenen Homepage
- ❖ Ein Download von Dossiers vertraulichen Daten ist nicht möglich!

Agentur/Mitgliedsstaaten

- ❖ Mitgliedsstaaten arbeiten im Netzwerk der Agentur
- ❖ Alle REACH-IT Systeme laufen in dem geschützten Bereich der Agentur
- ❖ Harmonisierte Prozeduren für Agentur und Mitgliedsstaaten

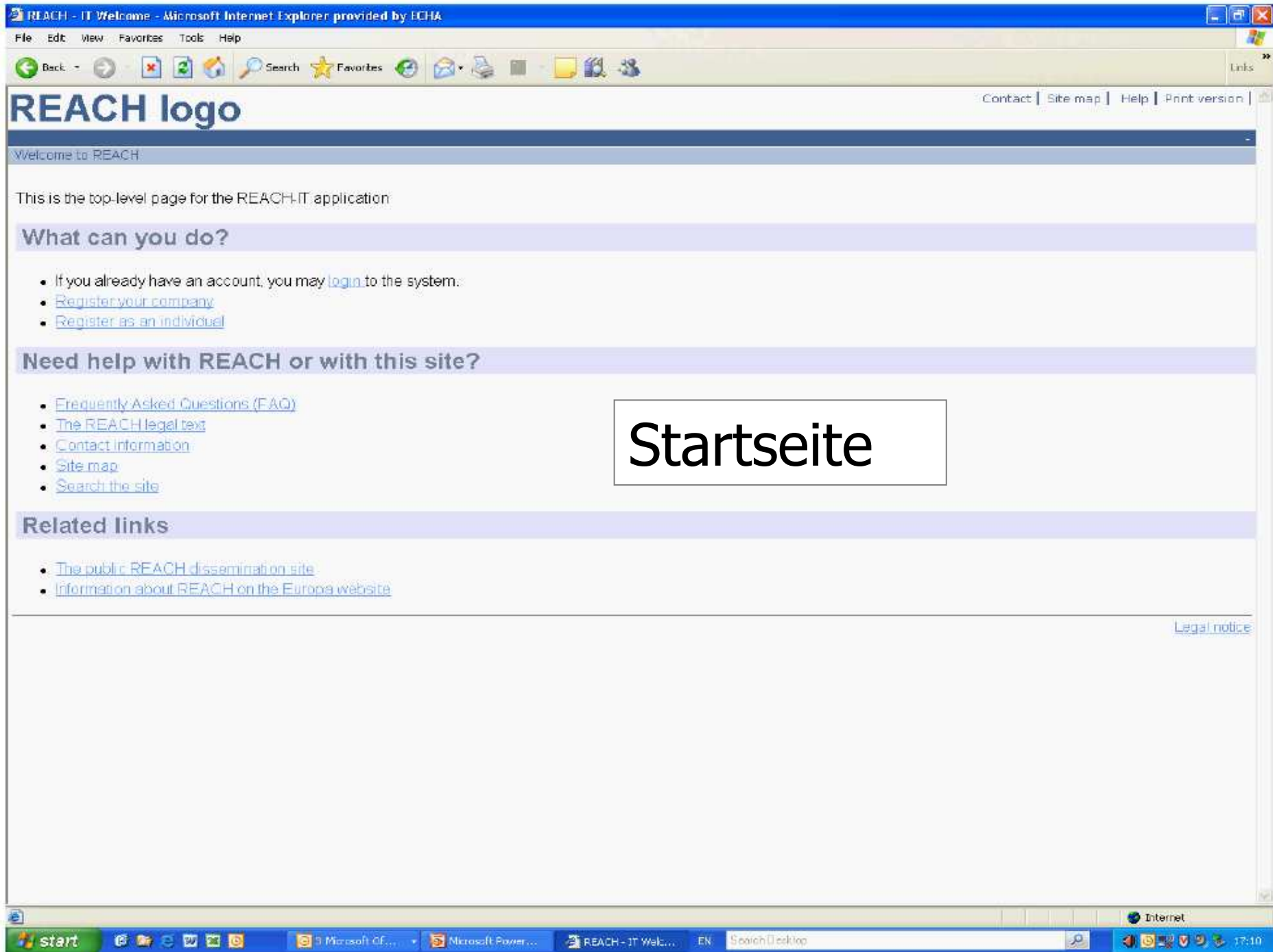
Öffentliche Website

- ❖ Öffentlicher Zugang, kein login nötig
- ❖ Nur nicht vertrauliche Information vorhanden

Vorregistrierung

Drei Möglichkeiten

- ❖ On-line in REACH IT
- ❖ Single-upload- Laden einzelner Datensätze, die in IUCLID erzeugt wurden
- ❖ Bulk upload – Laden einer Liste von Datensätzen die in IUCLID erzeugt wurden.
- ❖ Vorregistrierung und Pre-SIEF Module von REACH-IT sind im Januar 2008 verfügbar.



REACH logo

Welcome to REACH

This is the top-level page for the REACH-IT application

What can you do?

- If you already have an account, you may [login](#) to the system.
- [Register your company](#)
- [Register as an individual](#)

Need help with REACH or with this site?

- [Frequently Asked Questions \(FAQ\)](#)
- [The REACH legal text](#)
- [Contact information](#)
- [Site map](#)
- [Search the site](#)

Startseite

Related links

- [The public REACH dissemination site](#)
- [Information about REACH on the Europe website](#)

[Legal notice](#)

http://s-reach-pplb-01.reach.europa.local - REACH - IT Login - Microsoft Internet Explorer provided by ECHA

File Edit View Favorites Tools Help

Back Stop Refresh Home Search Favorites Links

REACH logo

Contact | Site map | Help | Print version

Login

Please provide your account information to connect to the system

Fields marked with an asterisk (*) are mandatory

* **User ID:**

* **Password:**

* **Enter the code shown:**

Can't read the text below? [Try another](#)

awaled

[Forget your user ID or password?](#)

[Legal notice](#)

Anmelden bei REACH IT

http://s-reach-pplb-01.reach.europa.local - REACH - IT Home - Microsoft Internet Explorer provided by ECHA

File Edit View Favorites Tools Help

Back Forward Stop Home Search Favorites Refresh Print Mail Stop

REACH logo [Contact](#) | [Site map](#) | [Search](#) | [Help](#) | [Print version](#)

You are connected as **Catherine Cornu** on behalf of Catherine's Specialty Chemicals Company - [Preferences](#) [Logout](#)

| | |
|------------------|--|
| Company | Home |
| Pre-registration | Pre-register mono-constituent substance |
| Substance | Pre-register multi-constituent substance |
| Dossier | View pre-registrations |
| Joint submission | |
| Pre-SIEF | |
| Worklist | |
| Messages | |
| Users | |
| Inventories | |

Messages in your message box

[Legal notice](#)

Auswahl der Art der Vorregistrierung

http://s-reach-pplb-01.reach.europa.local/reach/secure/home.faces#

start Microsoft Office Microsoft Power... http://s-reach-p... EN Search Desktop 17:13

http://s-reach-pplb-01.reach.europa.local - REACH - IT Pre-Registration - Microsoft Internet Explorer provided by ECHA

File Edit View Favorites Tools Help

Back Search Favorites

REACH logo

Contact | Site map | Search | Help | Print version

You are connected as **Catherine Cornu** on behalf of Catherine's Specialty Chemicals Company - [Preferences](#) [Logout](#)

Home > Pre-registration > **Mon-constituent** > Substance identification

Pre-registration: Identification | Similar substances | Tonnage | Contact | Representative | Remarks | Validation

Substance
Dossier
Joint submission
Pre-BIEF
Worklist
Messages
Users
Inventories

Please search the EC inventory using the fields below

EC number:

EC name:

CAS number:

Molecular formula:

If you think your substance does not belong to the EC inventory, you may identify it in one of the following other ways:

- 2 Or, you can identify the substance by its [CAS identity](#)
- 3 Or, you can identify the substance by its [chemical name\(s\)](#)

[Legal notice](#)

Eingabe des Stoffes

Done

start

3 Microsoft Of... Microsoft Power... http://s-reach-p... EN Search Desktop

Internet

17:15

REACH logo

You are connected as **Catherine Cornu** on behalf of Catherine's Specialty Chemicals Company - [Preferences](#) [Logout](#)

Home > Pre-registration > Mono-constituent > Substance identification

Company

Identification

Similar substances

Tonnage

Contact

Representative

Remarks

Validation

Pre-registration

Substance

Dossier

Joint submission

Pre-SIEF

Worklist

Messages

Users

Inventories

The substance you want to pre-register is identified by the following information:

aniline

EC number: 200-539-3

EC name: aniline

CAS number: 82-53-3

Molecular formula: C6H7N

Description:

>> Next

[Legal notice](#)

http://s-reach-pptb-01.reach.europa.local - REACH - IT Pre-Registration - Microsoft Internet Explorer provided by ECHA

File Edit View Favorites Tools Help

Back Forward Stop Home Search Favorites Refresh Print Mail

REACH logo [Contact](#) | [Site map](#) | [Search](#) | [Help](#) | [Print version](#)

You are connected as **Catherine Cornu** on behalf of Catherine's Specialty Chemicals Company - [Preferences](#) [Logout](#)

Home > Pre-registration > Mono-constituent > Similar Substances

Company
Pre-registration
Substance
Dossier
Joint submission
Pre-SIEF
Worklist
Messages
Users
Inventories

Identification Similar substances Tonnage Contact Representative Remarks Validation

You may now [add similar substances](#) for your substance. Such information is required for QSAR and read-across.

<< Previous Next >>

[Legal notice](#)

Eingabe ähnlicher Stoffe

Done Internet

start Microsoft Office Microsoft PowerPoint http://s-reach-p... EN Search Desktop 17:19

http://s-reach-pplb-01.reach.europa.local - REACH - IT Pre-Registration - Microsoft Internet Explorer provided by ECHA

File Edit View Favorites Tools Help

Back - Search Favorites Links

REACH logo

Contact | Site map | Search | Help | Print version

You are connected as **Catherine Cornu** on behalf of Catherine's Specialty Chemicals Company - [Preferences](#) [Logout](#)

Home > Pre-registration > Mono-constituent > Tonnage

Company
Pre-registration
Substance
Dossier
Joint submission
Pre-SIEF
Worklist
Messages
Users
Inventories

Identification Similar substances **Tonnage** Contact Representative Remarks Validation

Please enter the tonnage band and your estimate registration date for the substance you pre-register.

* **Tonnage band:** Over 1000 tonnes/year

* **Registration date:** 01/12/2010

<< Previous >> Next

[Legal notice](#)

Tonnageband/Registrierzeitpunkt

Done Internet

start Microsoft Of... Microsoft Power... http://s-reach-p... EN Scotch Desktop 17:25

REACH logo

You are connected as **Catherine Comu** on behalf of Catherine's Specialty Chemicals Company - [Preferences](#) [Logout](#)

Company [Home](#) > [Pre-registration](#) > [Mono-constituent](#) > [Contact](#)

Pre-registration **Identification** Similar substances Tonnage **Contact** Representative Remarks Validation

Substance

Dossier

Joint submission

Pre-SIEF

Worklist

Messages

Users

Inventories

The following contact persons are defined for your company and are available to pre-registrations. You can select one of them or [create a new contact information](#). If you don't, your company contact information will be used.

| Select | First Name | Last Name | Phone | Fax | Email |
|-----------------------|------------|-----------|------------------|-----|-------------------------------|
| <input type="radio"/> | Catherine | Comu | +358 9 6861 8415 | | catherine.comu@echa.europa.eu |

Select as contact person

<< Previous

>> Next

[Legal notice](#)

Firmenkontakt

http://s-reach-pplb-01.reach.europa.local - REACH - IT Pre-Registration - Microsoft Internet Explorer provided by ECHA

File Edit View Favorites Tools Help

Back Forward Stop Refresh Home Search Favorites Links

REACH logo

Contact | Site map | Search | Help | Print version

You are connected as **Catherine Cornu** on behalf of Catherine's Specialty Chemicals Company - [Preferences](#) [Logout](#)

Home > Pre-registration > Mono-constituent > Representative

Company: **Identification** Similar substances Tonnage Contact Representative Remarks Validation

Pre-registration: **Identification** Similar substances Tonnage Contact Representative Remarks Validation

Substance

Dossier: You may appoint a third party representative to this pre-registration. This information will be available to other potential registrants. This person will participate to SIEF negotiation on behalf of your company.

Joint submission

Pre-SIEF: If you do not appoint a third party representative, the company contact information will be published within the pre-SIEF.

Worklist

Messages: There are currently no third party representatives defined for your company. You can [create a first third party representative](#), or go to the next step.

Users

Inventories

| Select | First Name | Last Name | Phone | Fax | Email |
|------------------|------------|-----------|-------|-----|-------|
| No Records Found | | | | | |

<< Previous >> Next

[Legal notice](#)

Third Party Representative

Done Internet

start Microsoft Office Microsoft Power... http://s-reach-p... EN Search Desktop 17:20

- Company
- Pre-registration
- Substance
- Dossier
- Joint submission
- Pre-SIEF
- Worklist
- Messages
- Users
- Inventories

Home > Pre-registration > Mono-constituent > Representative

- Identification
- Similar substances
- Tonnage
- Contact
- Representative
- Remarks
- Validation

Fill the form below to create a new contact person for your company. This person will have the type "pre-registration" and will be available for further pre-registration from the contact persons list.

Fields marked with an asterisk () are mandatory. Hovering over a ? sign displays help information.*

Person contact

Title: [Select Title]

* First name:

* Last name:

* Phone number:

Fax number:

* E-mail address:

Organisation

Organisation name:

Department:

Address

* Street:

Street 2:

* Postal code:

* City / Town:

Region / County:

* Country: [Select a Country]

Postal address:

Neue
Kontaktperson

REACH logo

You are connected as **Catherine Cornu** on behalf of Catherine's Specialty Chemicals Company - [Preferences](#) [Logout](#)

- Company
- Pre-registration
- Substance
- Dossier
- Joint submission
- Pre-SIEF
- Worklist
- Messages
- Users
- Inventories

Home > Pre-registration > Mono-constituent > Remarks

- Identification
- Similar substances
- Tonnage
- Contact
- Representative
- Remarks
- Validation

You may write down any comments about your substance in the text area below.

Please be aware that the provided information will be published within the associated pre-SIEF. Do not enter any confidential business information or other data you do not want to share with the members of the pre-SIEF.

Remarks

Additionally you may decide to enable pre-SIEF related messages. These messages might inform about the addition of a new pre-SIEF member, a change of the facilitator or changes of another member's pre-registration information.

I want to receive pre-SIEF related notifications for this substance

<< Previous

Next >>

[Legal notice](#)

REACH logo

You are connected as Catherine Cornu on behalf of Catherine's Specialty Chemicals Company - [Preferences](#) [Logout](#)

Company Home > Pre-registration > Mono-constituent > Validation

Pre-registration Identification Similar substances Tonnage Contact Representative Remarks Validation

Substance

You did not specify any substances that are similar to the one you are going to pre-register.

Dossier

Please verify your data before finalising your submission. You can go back to each step where corrections are needed.

Joint submission

Pre-SIEF

Worklist

[Substance identification](#) [Similar substances](#) [Tonnage](#) [Contact](#) [Representative](#) [Remarks](#)

Messages

Users

Substance identification

Bericht

Inventories

aniline

aniline

EC Number: 200-539-3

[Go to the Substance identity tab](#)

Similar substances

[Go to the Similar substances tab](#)

Tonnage and registration

Tonnage band: Over 1000 tonnes/year

Registration date: 1/12/2010

[Go to the Tonnage tab](#)

Contact person

| |
|------------------|
| Company |
| Pre-registration |
| Substance |
| Dossier |
| Joint submission |
| Pre-SIEF |
| Worklist |
| Messages |
| Users |
| Inventories |

Home > Pre-registration > Mono-constituent > Preregistration Complete

Your preregistration dossier has been successfully created. Please find below the submission report.

Preregistration dossier submission

SubmissionNumber

Your preregistration dossier has received the following submission number: **ZD120393-43**. Please use this number for any subsequent communication.This number is *not* the registration number for your substance. The registration number will be communicated to you after your dossier has passed completeness check.As the submission process may take some time, please, consult your [inbox](#) at a later time to see the status of your submission.[New mono-constituent or UVCE](#)[New multi-constituent](#)[View Pre-registrations](#)[Legal notice](#)

Zuteilung der Submission Number






REACH logo

You are connected as **Catherine_Cornu** on behalf of Catherine's Specialty Chemicals Company - [Preferences](#) [Logout](#)

- Company
- Pre-registration
- Substance
- Dossier
- Joint submission
- Pre-SIEF
- Worklist
- Messages
- Users
- Inventories

Home > Messages

Folders:

-  [Inbox Folder](#)
-  [User folder](#)
-  [Organization folder](#)
-  [Role folder](#)
-  [Deleted folder](#)

Inbox Folder

[Select All](#) | [Select None](#)

| Select | Details | Read | Subject: | Creation Date | Expire Date |
|--------------------------|-----------------------|---|--|---------------------------------|-------------|
| <input type="checkbox"/> | yHide | true | Your preregistration has been submitted | 28/09/2007 - 05:49 PM GMT+03:00 | |
| | | | <div style="border: 1px dashed gray; padding: 5px;"> <p>Creation Date: 28/09/2007 - 05:49 PM GMT+03:00</p> <p>Expire Date:</p> <p>Recipient: User(Catherine_Cornu)</p> <p>Subject: Your preregistration has been submitted</p> <p>Text content: Your preregistration has been submitted. Submission number: ZD120393-43 Download preregistration report</p> </div> | | |
| Delete | | Move to... User folder | | | |

[Legal notice](#)

Bestätigung

- Company
- Pre-registration
- Substance
- Dossier
- Joint submission
- Pre-SIEF
- Worklist
- Messages
- Users
- Inventories

Home > Messages

- Folders:
- Inbox Folder
 - User folder
 - Organization
 - Rule folder
 - Deleted folder

preregistration_report_1081191225289041[1].pdf - Adobe Reader

File Edit View Document Tools Window Help

Pre-Registration Report

Submission number: ZD120393-43

Company Information
Name: Catherine's Specialty Chemicals Company
Size category: Micro - less than XXXX employees
Invoice Fax Number: +358 9 6861 8415

Dossier

Type of submission
 Initial Submission

Executed tasks

| No | Task | Remark | Result |
|----|------------------------|---------------------|----------------|
| 1 | Virus check | Enforce rules | Not Applicable |
| 2 | File format validation | Enforce rules | Not Applicable |
| 3 | Check XML structure | Check XML structure | Not Applicable |
| 4 | Enforce rules | Enforce rules | Not Applicable |

| | Expire Date |
|---------|-------------|
| T+03:00 | |

[Legal notice](#)

REACH logo

You are connected as **Catherine Cornu** on behalf of Catherine's Specialty Chemicals Company - [Preferences](#) [Logout](#)

- Company
- Pre-registration
- Substance
- Dossier
- Joint submission
- Pre-SIEF
- Worklist
- Messages
- Users
- Inventories

- Home > Messages
- Pre-register mono-constituent substance
- Pre-register multi-constituent substance
- View pre-registrations
- File folder
- Related folder

Inbox Folder

[Select All](#) | [Select None](#)

| Select | Details | Read | Subject | Creation Date | Expire Date |
|--------------------------|---------|------|---------|-------------------------|-------------|
| <input type="checkbox"/> | | | | 07 - 05:49 PM GMT+03:00 | |

Subject: Your preregistration has been submitted

Text content: Your preregistration has been submitted.
Submission number: ZD120393-43
[Download preregistration report](#)

User folder

Vorregistrierung einer Multi-constituent Substance

[Legal notice](#)

REACH logo

You are connected as **Catherine Cornu** on behalf of Catherine's Specialty Chemicals Company - [Preferences](#) [Logout](#)

Home > Pre-registration > Multi-constituent > Substance identification

Identification | Similar substances | Tonnage | Contact | Representative | Remarks | Validation

Pre-registration

Substance

Dossier

Joint submission

Pre-SIEF

Worklist

Messages

Users

Inventories

The substance you want to pre-register is identified by the following information:

[S-(E)]-4-(2,6,6-trimethyl-2-cyclohexen-1-yl)-3-buten-2-one

EC number: 238-362-9

EC name: [S-(E)]-4-(2,6,6-trimethyl-2-cyclohexen-1-yl)-3-buten-2-one

CAS number: 14398-38-8

Molecular formula: C₁₃H₂₀O

Description:

[Legal notice](#)

REACH logo

You are connected as **Catherine Cornu** on behalf of Catherine's Specialty Chemicals Company - [Preferences](#) [Logout](#)

Company

[Home](#) > [Pre-registration](#) > [Multi-constituent](#) > [Substance identification](#)

Pre-registration

Identification

Similar substances

Tonnage

Contact

Representative

Remarks

Validation

Substance

Dossier

Joint submission

Pre-SIEF

Worklist

Messages

Users

Inventories

You can specify up to 10 substance constituents which should be contained in your reaction mass with an amount of $10 \leq X \leq 80\%$ (w/w)**List of selected substance identities**

|S-(E)-4-(2,6,6-trimethyl-2-cyclohexen-1-yl)-3-buten-2-one

EC number: 238-362-9[Remove this identity](#)[Legal notice](#)

Bis zu 10 Substanzen können
eingeben werden!

REACH logo

You are connected as **Catherine Cornu** on behalf of Catherine's Specialty Chemicals Company - [Preferences](#) [Logout](#)

Company [Home](#) > [Pre-registration](#) > [Multi-constituent](#) > [Substance identification](#)

Pre-registration **Identification** Similar substances Tonnage Contact Representative Remarks Validation

Substance

Dossier

Joint submission

Pre-SIEF

Worklist

Messages

Users

Inventories

You can specify up to 10 substance constituents which should be contained in your reaction mass with an amount of $10 \leq X \leq 80\%$ (w/w)

List of selected substance identities

[R-(E)]-4-(2,6,6-trimethyl-2-cyclohexen-1-yl)-3-buten-2-one

EC number: 246-069-2

[Remove this identity](#)

[S-(E)]-4-(2,6,6-trimethyl-2-cyclohexen-1-yl)-3-buten-2-one

EC number: 238-362-9

[Remove this identity](#)

>> Next

[Legal notice](#)

Beispiel für 2 Substanzen

http://s-reach-pplb-01.reach.europa.local - REACH - IT Pre-Registration - Microsoft Internet Explorer provided by ECHA

File Edit View Favorites Tools Help

Back - Forward - Stop - Home - Search - Favorites - Links

REACH logo

Contact | Site map | Search | Help | Print version

You are connected as Catherine Corou on behalf of Catherine's Specialty Chemicals Company - Preferences Logout

Home > Pre-registration > Multi-constituent > Tonnage

Company
Pre-registration
Substance
Dossier
Joint submission
Pre-SIEP
Worklist
Messages
Users
Inventories

Identification Similar substances **Tonnage** Contact Representative Remarks Validation

Please enter the tonnage band and your estimate registration date for the substance you pre-register.

* **Tonnage band:** Between 1 to 10 tonnes/year

* **Registration date:** 01/06/2018

<< Previous >> Next

[Legal notice](#)

Tonnageband/Registrierzeitraum

Done Internet

start 9 Microsoft Of... Microsoft Power... http://s-reach-p... EN Search Desktop 18:03

You are connected as **Catherine Cornu** on behalf of Catherine's Specialty Chemicals Company - [Preferences](#) [Logout](#)

Home > Pre-registration > Multi-constituent > Validation

Pre-registration: **Identification** | Similar substances | Tonnage | Contact | Representative | Remarks | Validation

Substance

Dossier

Joint submission

Pre-SIEF

Worklist

Messages

Users

Inventories

You did not specify a third party representative, the provided contact information will be published in the pre-SIEF.
You did not specify any substances that are similar to the one you are going to pre-register.

Please verify your data before finalising your submission. You can go back to each step where corrections are needed.

[Substance identification](#) | [Similar substances](#) | [Tonnage](#) | [Contact](#) | [Representative](#) | [Remarks](#)

Substance identification

Reaction mass of [R-(E)]-4-(2,6,6-trimethyl-2-cyclohexen-1-yl)-3-buten-2-one, [S-(E)]-4-(2,6,6-trimethyl-2-cyclohexen-1-yl)-3-buten-2-one

[R-(E)]-4-(2,6,6-trimethyl-2-cyclohexen-1-yl)-3-buten-2-one

EC Number: 246-069-2

[S-(E)]-4-(2,6,6-trimethyl-2-cyclohexen-1-yl)-3-buten-2-one

EC Number: 238-362-9

[Go to the Substance identity tab](#)

Bericht

Similar substances

[Go to the Similar substances tab](#)

Tonnage and registration

Tonnage band: Between 1 to 10 tonnes/year

Registration date: 1/6/2018

http://s-reach-pplb-01.reach.europa.local - REACH - IT View Internal Messages - Microsoft Internet Explorer provided by ECHA

File Edit View Favorites Tools Help

Back Forward Stop Home Search Favorites Refresh Print

REACH logo [Contact](#) | [Site map](#) | [Search](#) | [Help](#) | [Print version](#)

You are connected as **Catherine Cornu** on behalf of Catherine's Specialty Chemicals Company - [Preferences](#) [Logout](#)

Home > Messages

Company Pre-registration Substance Dossier Joint submission Pre-SIEF Worklist Messages Users Inventories

[Folders](#)

Submit dossier
View dossiers
Completeness check
[Internal folder](#)

Inbox Folder

[Select All](#) | [Select None](#)

| Select | Details | Read | Subject | Creation Date | Expire Date |
|--------------------------|----------------------|-------|---|---------------------------------|-------------|
| <input type="checkbox"/> | Show | false | Your preregistration has been submitted | 28/09/2007 - 06:07 PM GMT+03:00 | |
| <input type="checkbox"/> | Show | true | Your preregistration has been submitted | 28/09/2007 - 05:49 PM GMT+03:00 | |

[Delete](#) [Move to...](#) [User folder](#)

[Legal notice](#)

Bulk submission

http://s-reach-pplb-01.reach.europa.local/reach/secure/company/definition/view_company_info.faces?_afRfm=109a4d64# Internet

REACH logo

You are connected as [Catherine Cornu](#) on behalf of Catherine's Specialty Chemicals Company - [Preferences](#) [Logout](#)[Home](#) > [Submit Dossier Intro](#)

Company

Pre-registration

Substance

Dossier

Joint submission

Pre-SIEF

Worklist

Messages

Users

Inventories

Dossier submission

Registration (regular)

→ Submit a regular registration dossier

Registration (S.i.A.)

→ Submit a substance-in-article registration dossier

Registration (O.s.I.I.)

→ Submit an on-site isolated intermediates registration dossier

Registration (T.O.s.I.I.)

→ Submit a transported on-site isolated intermediates registration dossier

Pre-registration (bulk)

→ Pre-register phase-in substances in bulk

PPORD

→ Submit a PPORD dossier

Inquiry

→ Submit an inquiry dossier for a non-phase-in substance

C&L

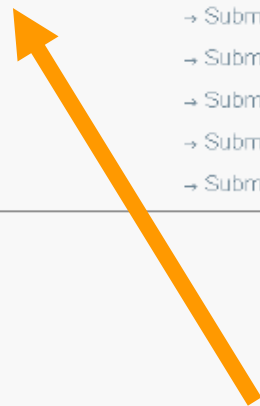
→ Submit a C&L notification

DU report

→ Submit a downstream user report

DU notification

→ Submit a downstream user notification

[Legal notice](#)

REACH logo

You are connected as **Catherine Cornu** on behalf of Catherine's Specialty Chemicals Company - [Preferences](#) [Logout](#)Company Home > [Submit Dossier Intro](#) > [Submit External Dossier](#)Pre-registration **Preregistration dossier submission (bulk)**

Substance Please, indicate the file which contains your dossier

Dossier * **File name:**

Joint submission

Important noticePre-SIEF Dossier file cannot exceed the maximum size of *20 MBytes*

Worklist

Messages If you would like to submit files bigger than this limit, please, request a one-time access code using the following link. [Request access code](#)

Users

Inventories The Agency will check your request and may grant your upload by sending this one-time access code to your personal inbox. This process might last max. 24 hours.

One-time access code

If you have an access code for a large dossier, please, enter it here

Big file access code: [Legal notice](#)

Dossier für die Vorregistrierung

REACH logo

You are connected as **Catherine Cornu** on behalf of Catherine's Specialty Chemicals Company - [Preferences](#) [Logout](#)

Company

[Home](#) > [Submit Dossier Intro](#) > [Confirm Dossier Submission](#)

Pre-registration

Substance

Dossier

Joint submission

Pre-SIEF

Worklist

Messages

Users

Inventories

Confirm Dossier Submission

Dossier type [Pre-registration \(bulk\)](#)Submission type [External dossier](#)Dossier file name [C:\Documents and Settings\u07041\Desktop\Pre_registration_Bulk_Catherines Specialty Chemicals Co.xml](#)

Big file access code:

[Legal notice](#)

Absenden des Dossiers

REACH logo

Contact | Site map | Search | Print version |

English (en) ▾

Company > pre-SIEF > View > 202-049-5

You are connected as *jd (Jane Doe)* on behalf of *The Chemical Company, Inc.* - Logout

Pre-SIEF definition

Caution:

The Agency does not take any legal liability or responsibility for information shared over this page.

Please note that the participants of this site have not had their identity checked.
By using this site you agree not to disclose any of the information you see to third parties.

Zusammensetzung Des Pre-SIEF

EC number: [202-049-5](#)

Substance name: [naphthalene](#)

Substances to read-across:

[203-000-0 naphthalone](#) [58-08-2 coffein](#)

Information from the SIEF formation facilitator

```
Dear colleagues,

For the substance naphthalene there will be a SIEF for data exchange
available following the link
http://naphthalene.SIEF-Portal.eu

Best regards
```

PRE-SIEF partnership

| Company name | Partnership type | Facilitator | Deadline / Tonnage band | Information from member | Contact person name |
|----------------------------|-----------------------------------|-------------|--------------------------------|-------------------------------|---|
| The Chemical Company, Inc. | Potential registrant | ■ | Over 1000 tonnes 01/12/2010 | info field... | Jane Doe details... |
| Chemicals Association | Potential registrant | ■ | 1 to 10 tonnes 01/06/2018 | info field... | John Smith details... |
| Les Usine Chimiques | Potential registrant | ■ | | info field... | Jean Dupond details... |
| Chem Lawyers | Potential registrant | ■ | | info field... | John Grisham details... |
| La chimie du Brabant | Third party - MI < 1 tonne / year | | | info field... | Anne Delacourt details... |
| Painting factory | Third party - Downstream user | | | info field... | Jack Down details... |

Registrierung (Submission)

- ❖ Erfolgt wie die Bulk Vorregistrierung
- ❖ Joint Submission ist ebenfalls vorgesehen



- ❖ Eingangsbestätigung

Select All | Select None

| Select | Details | Read | Subject | Creation Date | Expire Date |
|--------------------------|----------------------|------|---------------------------|---------------------------------|-------------|
| <input type="checkbox"/> | Hide | true | Reference number assigned | 02/10/2007 - 11:27 AM GMT+03:00 | |

Creation Date: 02/10/2007 - 11:27 AM GMT+03:00

Expire Date:

Recipient: User(phb)

Subject: Reference number assigned

Text content: Reference number has been assigned to your submission.
 Submission number: FF120241-70
 Submission timestamp: 02/10/2007 11:27:52
 Dossier type: Registration (regular)

Substance UUID:
 IUC5-e6ac2460-de01-4e47-9b9a-9d6cb25c4fd9 Reference number:
 01-2114086-65-0000

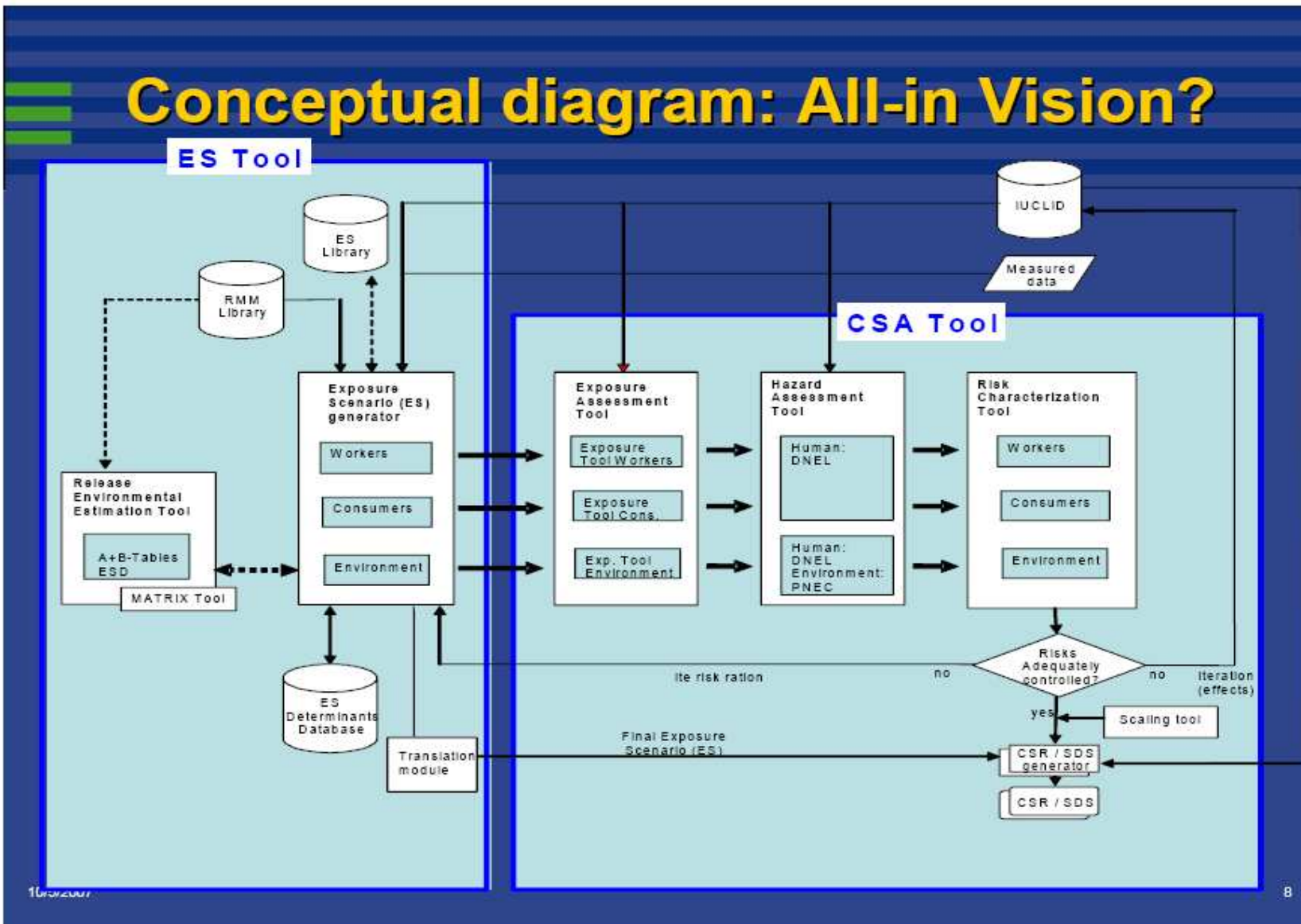
[Download submission report](#)

Ablauf einer Joint Submission

- ❖ Schritt 1: Die Lead Company logged sich in REACH IT ein
- ❖ Schritt 2: Die Lead Company wählt aus dem Menu die Option "to create a Joint Submission"
- ❖ Schritt 3: Die Lead Company identifiziert die entsprechende Substanz und füllt die für die Joint Submission relevanten Felder.
- ❖ Schritt 4: Die Lead Company sendet das Registrierdossier für die Joint submission lead registration.
- ❖ Schritt 5: Die anderen Firmen geben ihren Firmenspezifischen Teil ab.

CSA/CSR tools

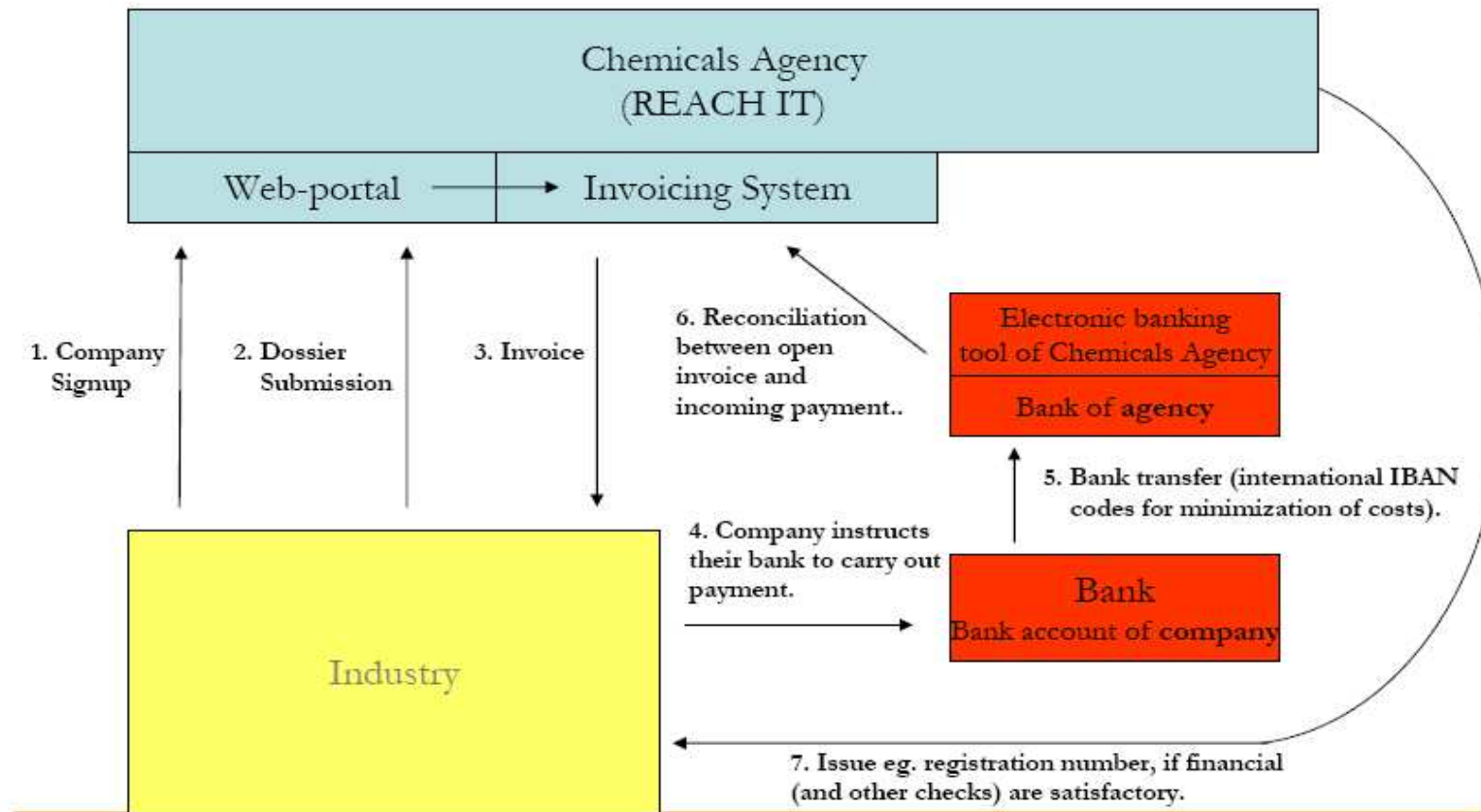
- ❖ Die Analysenstudie April 2007 – April 2008
- ❖ Themen
 - Erstellen von Expositionsszenarien
 - Erstellen eines Chemical Safety Assessments und eines Chemical Safety Reports
 - Die Studie baut auf RIP 3.2 auf.
- ❖ Die Entwicklung eines neuen Tools wäre sehr zeitaufwändig. ⇒ Pragmatische Lösungen sind gefordert
- ❖ Deshalb: Verwendung existierender IT tools
 - Analyse bestehender Tools wie EUSES, EASE, CONSEXPO, ECETOC TRA, MATRIX-tool
 - Identifizierung von Lücken
 - Füllen von Lücken durch CSR tool (“Short-term solution”, “module-approach”),
- ❖ Ziel: arbeitsfähige Tools bis Ende 2008/2009



Rechnungen in REACH IT

- ❖ Die Gebührenverordnung schreibt Gebühren für die verschiedenen Aktionen vor: Registrierung (inkl. Update, Antrag auf Vertraulichkeit), PPORDs, Antrag auf Zulassung, Einsprüche etc.
- ❖ Beispiel: Die Registriernummer wird erst nach Entrichten der Gebühr bezahlt.
- ❖ Wie bekommt man die Rechnung?
 - Via Firmen-Homepage im REACH IT system
 - Oder bei Fax

Process overview



<http://echa.europa.eu>

Fragen?